



# Community Health Care Program Overview

---

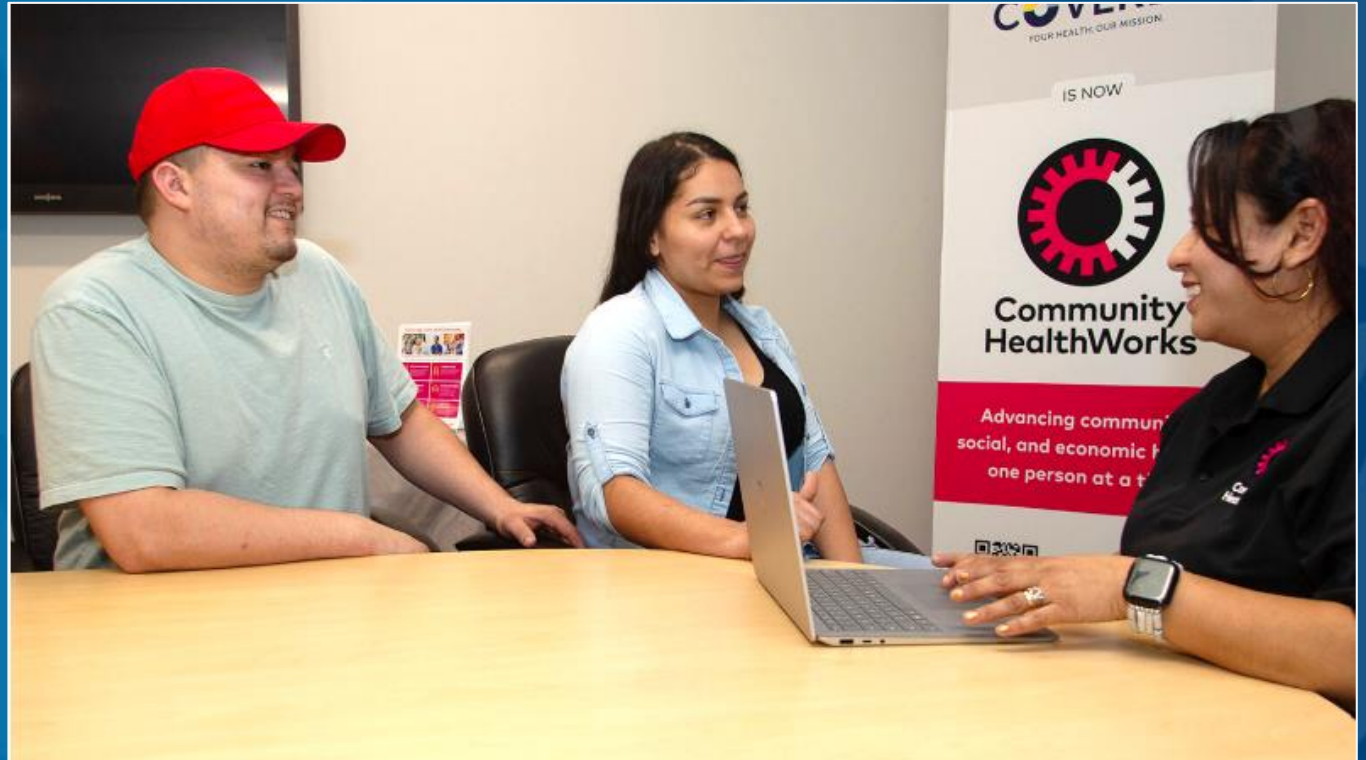
Open Enrollment is  
**November 1, 2024 - January 31, 2025**

Applications will be available on 11/1  
at [kp.org/chcp](https://kp.org/chcp)



# Overview

1. What is CHCP?
2. What are the benefits?
3. Eligibility
4. How to apply
5. Resources and trainings
6. How you can help



“We never thought we’d have insurance before we found this.”



# What is the Community Health Care Program?

Kaiser Permanente's Community Health Care Program is a comprehensive health coverage option for **Californians who can't get any other coverage**. **CHCP enrollees are KP members**.

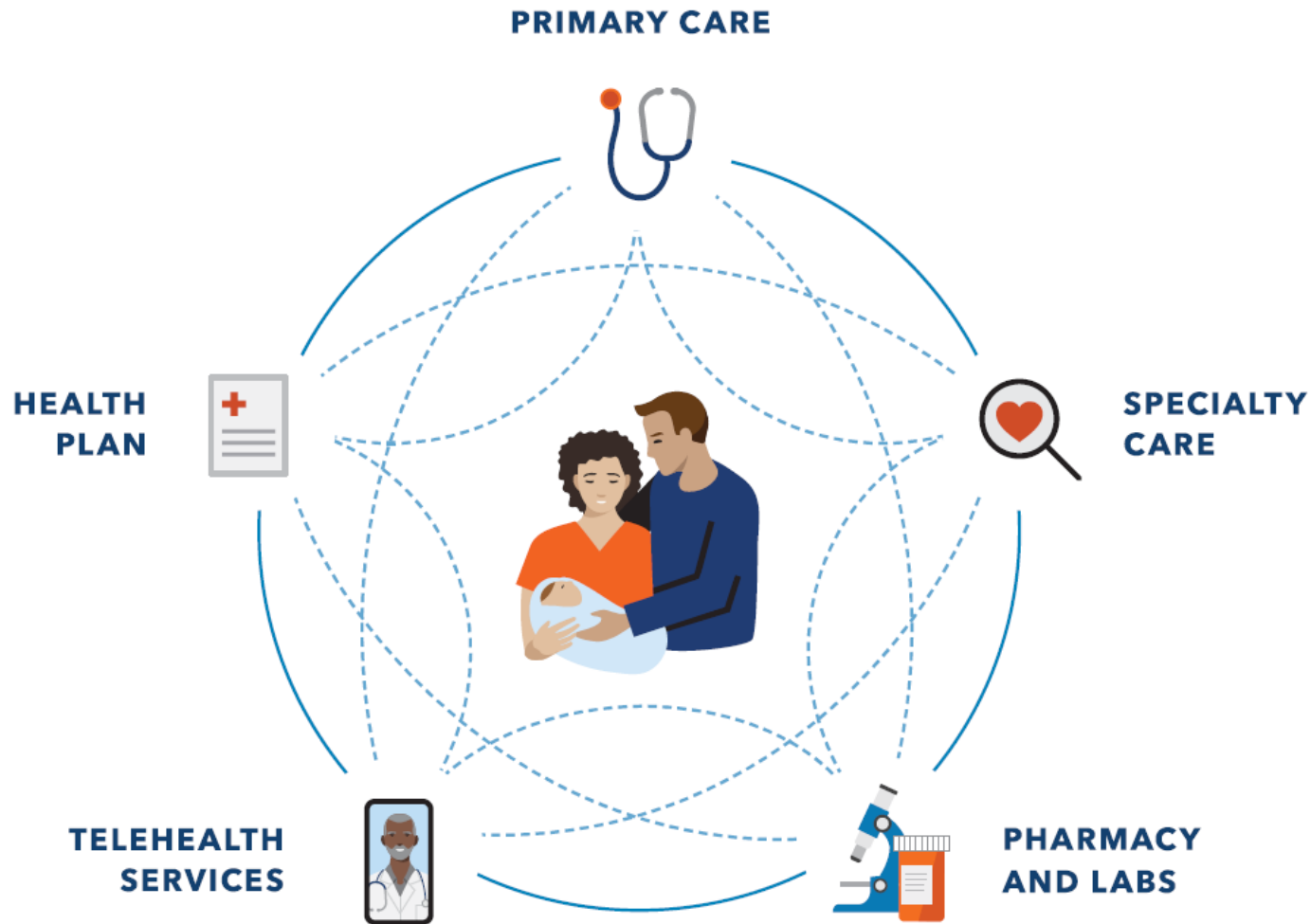


**Great coverage is now within your reach**

CHCP provides comprehensive **high-quality coverage** through the off-exchange Kaiser Permanente Individuals and Families (KPIF) Platinum 90 HMO Plan.

CHCP members have **no monthly premiums** or **copays** and **no out-of-pocket costs** for most care at Kaiser Permanente facilities.

# What's covered under the KP Platinum 90 HMO Plan?



## Some of the health plan benefits covered

### **\$0 Out-Of-Pocket Costs**

for KP Platinum 90 HMO members for covered services at KP facilities:

- Chat, Email, Phone and Video Visits
- Preventive Care, Screening, Immunizations
- Primary Care Office Visit
- Specialty Care Office Visit
- Most X-rays & Lab Tests
- Prescription Drugs (up to a 30-day supply at KP plan pharmacy or through mail order)
- Mental Health Services
- Emergency and Urgent Care
- Inpatient Hospital Stay

# Who's eligible?



Not eligible for other health coverage (e.g., Medi-Cal, Medicare, a job-based health plan, or Covered California)



Income between 139% - 300% FPL (up to \$45,180 for single person or \$93,600 for family of 4)



Reside in KP service area (links to be provided)




US Citizenship/legal status is not a requirement

## Kaiser Permanente Cares About Privacy


Kaiser Permanente keeps all applicant information private, as required by law, and uses the information to determine eligibility for other programs. CHCP is not a public benefit program. It is a KP-sponsored program to address community needs.

# Comparing Medi-Cal and CHCP

	Medi-Cal	 Community Health Care Program
Geography	All California residents	Californians who live in KP service areas
Age	No age restriction	No age restriction
Income	<138% FPL	Up to 300% FPL
Immigration Status	No restriction	No restriction
Enrollment Period	Enrolls all year	Enrolls Nov 1–Jan 31 except for Qualifying Life Events
Re-Applying	Annual redetermination required	Annual subsidy reapplication required

*Note: this is not an exhaustive list, and other rules may apply*

# CHCP eligibility compared to other programs

		Medi-Cal		 Community Health Care Program		Covered California
Income		Adults up to <b>138%</b> FPL	Kids up to <b>266%</b> FPL	Adults: <b>&gt;138% - 300%</b> FPL	Kids: <b>&gt;266% - 300%</b> FPL	<b>&gt;138% - 400%</b> FPL qualifies for subsidy
Household Size	1	\$20,783	\$40,060	\$20,784 - \$45,180	\$40,061 - \$45,180	\$20,784 - \$60,240
	2	\$28,208	\$54,371	\$28,209 - \$61,320	\$54,372 - \$61,320	\$28,209 - \$81,760
	3	\$35,632	\$68,682	\$35,633 - \$77,460	\$68,683 - \$77,460	\$35,633 - \$103,280
	4	\$43,056	\$82,992	\$43,057 - \$93,600	\$82,993 - \$93,600	\$43,057 - \$124,800
	5	\$50,481	\$97,303	\$50,482 - \$109,740	\$97,304 - \$109,740	\$50,482 - \$146,320
US Citizenship Status		Not required		Not required		Must be lawfully present in the U.S. to qualify

*Note: Eligibility for other health coverage is most common reason for CHCP denial*

# How to apply for CHCP



**CHCP Open Enrollment starts November 1, 2024, and ends January 31, 2025.**  
Applications will be available on 11/1 at [kp.org/chcp](https://kp.org/chcp).



- Two applications are needed:**
- 1) The Kaiser Permanente Individuals and Families (KPIF application)
  - 2) Subsidy application to determine eligibility

## Required Documentation

**Household Income:** Such as pay stubs, W2 forms, profit and loss forms, or signed attestations.  
**Cash Income:** Applicants with cash income can submit a signed attestation.

## Submitting Applications

Email is recommended but fax and snail mail are okay. Processing applications can take up to 6 weeks.

## Coverage Start Date

Application received by	Coverage starts
Dec 31, 2024	Jan 1, 2025
Jan 31, 2025	Feb 1, 2025



# Find enrollment assistance organizations

Applicants are encouraged to apply through one of our Enrollment Partners.

kp.org/chcp/gethelp

Note: List is being updated

## Get Help with Community Health Care Program

If you have questions about the Kaiser Permanente Community Health Care Program, please call Member Services at 1-800-464-4000 (TTY 711), 24 hours a day, 7 days a week (closed major holidays).

### Enrollment Assistance Organizations

For help signing up for the Kaiser Permanente Community Health Care Program or renewing your membership, call or visit one of the locations below. An enrollment assister will be happy to help you.

- + Alameda County
- + Contra Costa County
- + El Dorado County

#### – Orange County

Community Health Initiative of Orange County  
1505 E. 17th St., Ste. 121  
Santa Ana, CA 92705  
855-927-8333  
[Visit site](#)

#### – Contra Costa County

Contra Costa Health Services  
1-800-771-4270 (toll free)  
[Visit site](#)  
Monument Crisis Center  
1990 Market St.  
Concord, CA 94520  
925-825-7751  
[Visit site](#)

# Outreach materials

CHCP flyers, FAQs, CHCP overview deck and more will be posted on the webinar website as available: <https://virtualconnect.kaiserpermanente.org/chcp-briefing/>

## Available in:

Spanish  
Chinese  
Vietnamese  
Tagalog  
Korean  
Farsi  
Cambodian  
Armenian



**Are you a California resident without access to health coverage?**

You may qualify for the Community Health Care Program (CHCP). With CHCP, you'll receive high-quality health care and pay **no monthly premiums, no copays, and no out-of-pocket costs** for most care at Kaiser Permanente.

**Do I qualify?**

- You must be a California resident living in a Kaiser Permanente service area. **You don't need to be a U.S. citizen to qualify.**
- Your household income must be no more than 300% of the federal poverty level (for example, up to \$45,180 for a single person or \$93,600 for a family of 4 in 2024).
- You must not have access to other health coverage – including Medi-Cal, Medicare, a job-based health plan, or coverage through Covered California.

**Need help with your application?**  
Visit or call:

**High-quality care at your fingertips**

-  **Choose your doctor** – and change at any time
-  Virtual care with **kp.org** or the **Kaiser Permanente app\***
-  Access **self-care programs and resources online**

 You can apply November 1 through January 31. Scan the QR code to get started. Or call 1-800-464-4000 (TTY 711), 24 hours a day, 7 days a week (closed major holidays).

\*To use the Kaiser Permanente app, you must be a member registered on **kp.org**.  
All plans are offered and underwritten by Kaiser Foundation Health Plan, Inc., One Kaiser Plaza, Oakland, CA 94612.

Learn more at [kp.org/chcp](https://kp.org/chcp)

 **KAISER PERMANENTE.**

Enrollment partners  
can insert contact  
information and logo

# Enrollment assistance training

---

Kaiser Permanente is providing technical enrollment assistance trainings on CHCP for organizations with experience enrolling community members in subsidized programs (e.g., Medi-Cal and Covered California). *Office hours will be available following trainings to answer questions and resolve issues.*



**Tues, October 15<sup>th</sup>**  
**10-11:30am**



**Wed, October 23<sup>rd</sup>**  
**1:30-3pm**



**Training in Spanish,**  
**date TBD**

# How you can help

---

*We appreciate your partnership helping more Californians without health coverage to apply for CHCP starting on November 1st.*



**Inform the  
communities  
you serve**  
flyers, social media



**Share with staff  
and networks**  
overview deck, collateral



**Participate in  
enrollment  
assistance training**

# Contact us

## CHCP

**Website:** [kp.org/chcp](https://kp.org/chcp)

### General Program Questions

 [chco@kp.org](mailto:chco@kp.org)

### Application Questions

 [CHC-Applications@kp.org](mailto:CHC-Applications@kp.org)

## KP Community Health

*For more information on becoming an enrollment partner, please contact:*



**Glenda Monterroza**, CH Lead  
Kaiser Permanente NCAL  
[glenda.monterroza@kp.org](mailto:glenda.monterroza@kp.org)



**Cody Ruedaflores**, CH Lead  
Kaiser Permanente SCAL  
[cody.j.ruedaflores@kp.org](mailto:cody.j.ruedaflores@kp.org)